



Independent Security Partners



(866) 951 - 9370

www.independentsecuritypartners.com

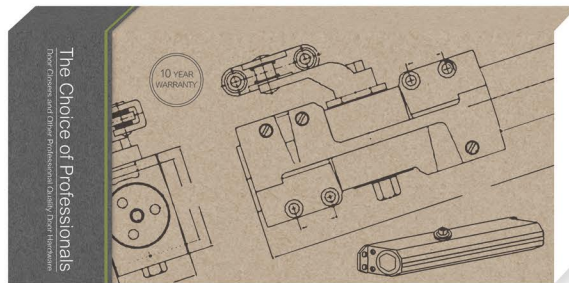
info@independentsecuritypartners.com



INTRODUCTION

ISP Private Labeling Program

Customized packaging available on products at standard net discounts designed to provide a private labeled product to promote your company.



Your company's Name, Logo & Contact Information

FINISH DEFINITIONS

US3.....Polished Brass.....605	US26.....Polished Chrome.....625
US4.....Satin Brass.....606	US26D.....Satin Chrome.....626
US5.....Antique Satin Brass.....609	US32D.....Stainless Steel.....630
US10B.....Oil Rubbed Bronze.....613	AL.....Aluminum.....628
US15.....Satin Nickel.....619	DU.....Duranodic.....624
US15A.....Antique Satin Nickel.....620	

EARLY PAYMENT DISCOUNT

Orders of \$1,200 or more can deduct freight costs if invoice is paid in full within 30 days of invoice date.*

For next day shipments, please order before noon to ensure delivery.

*Some restrictions apply. Call your sales rep for more details.

E-mail your orders to:

**info@independent
securitypartners.com**

CREDIT CARD ORDERS

We now accept these major credit cards.

*We do not accept American Express.



(866) 951 - 9370

**www.independent
securitypartners.com**



WARRANTY

LIMITED WARRANTY

Independent Security Partners Inc. warrants products in this catalog free from defects in material and workmanship under normal use and service. Firelands Hardware Inc. agrees to repair or replace any product after inspection to be found with defects from workmanship or materials. Any products returned for warranty consideration will not be accepted without prior approval and an issued RGA (Returned Goods Authorization) number. All shipments back to Firelands Hardware Inc. will be prepaid by the purchaser within the specified warranty period. This limited warranty will not cover products found to be abused, altered, damaged, misused, cut or worn, or damaged from exposure to liquids or moisture or outdoor use. To the extent permitted by law, Firelands Hardware Inc. disclaims all other implied or express warranties including all warranties of merchantability and / or fitness for a particular purpose.

All products have a 1 year limited warranty unless otherwise specified in the catalog.

LIMITATION OF LIABILITY

This limited warranty is your sole remedy and Firelands Hardware Incorporated shall not be liable for any damages, whether direct, indirect, incidental, special, consequential, exemplary, or otherwise, including lost revenues and lost profits, arising out of any theory of recovery, including statutory, contract, or tort. In no event will Firelands Hardware Incorporated's entire liability exceed the purchase price of this product. Some states, provinces, and territories do not allow the exclusion or limitation of incidental or consequential damages or a limitation on how long an implied warranty lasts, so the above limitations or exclusions may not apply to you. This limited warranty gives you specific legal rights, and you may also have other rights which vary from state to state, province to province, and territory to territory.

Independent Security Partners



(866) 951 - 9370 www.independentsecuritypartners.com

DOOR CLOSERS

DC41 Door Closer with Full Plastic Cover

Similar to LCN 4041

Standard Features

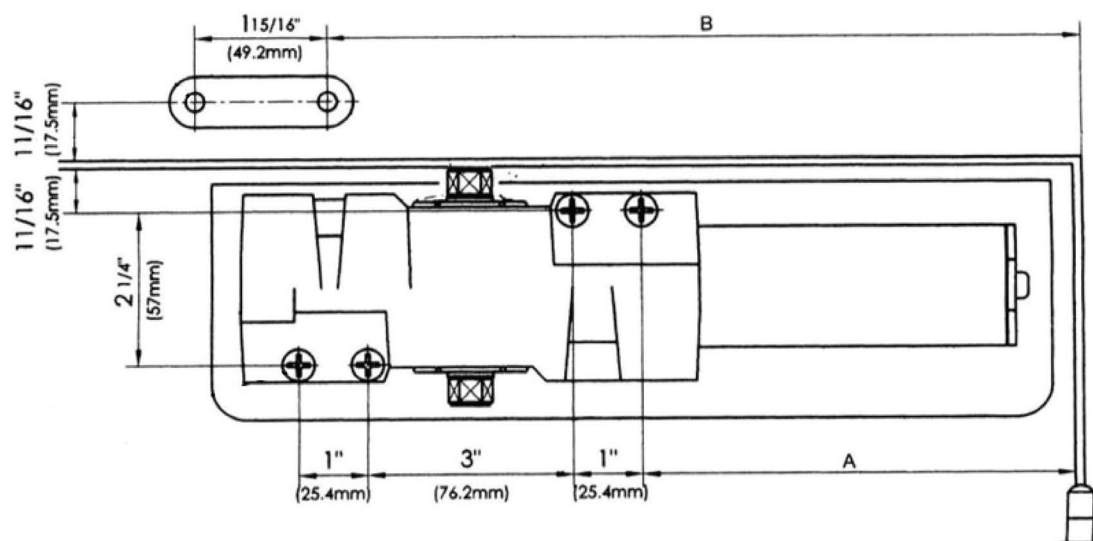
- ANSI A 156.4 grade 1 certified
- Heavy duty cast iron body; forged steel arm
- Adjustable size 1 through 6
- Barrier free operation
- Non-handed
- Adjustable closing and latching speed
- Standard tri-packed for regular arm, top jamb and parallel arm application
- Standard packing including sex nuts and bolts
- Full plastic cover is standard feature
- Full cover: Aluminum (AL), Duranodic (DU)
- 10 Year Warranty



\$195.⁰⁰/each (4 to a case)



Technical Dimensions



Description

- A. Length of Closer Body
- B. Horizontal Mounting Holes
- C. Vertical Mounting Holes
- D. Closer Body Height
- E. Projection From Door
- F. Arm Shoe Spacing Holes

Dimensions

- 11"
- 1" CTC
- 2 1/4" CTC
- 2 3/4"
- 2"
- 1 15/16" CTC

INSTALLATION DIMENSIONS

OPENING	'A'	'B'
TO 100"	7-5/16" (185)	11-13/16" (300)
TO 130"	6-1/4" (159)	10-13/16" (275)



Accessories

DOOR CLOSERS

Independent Security Partners



DPRA41

Drop Plate Regular Arm Mount

Available Finish: AL/DU

Required for hinge side mount when top rail is less than 3 ³/₄." Plate requires 2" minimum top rail.

\$43.⁷⁵/each



DPG41

Drop Plate-Low Clearance

Available Finish: AL/DU

For use when ceiling clearance prevents normal top jamb mounting. For use when overhead door holder prevents normal top jamb mounting.

\$43.⁷⁵/each



DPTJ41

Drop Plate-Top Jamb Mount

Available Finish: AL/DU

Required for top jamb when frame face is less than 3 ¹/₂." Plate requires 1 ³/₄" minimum frame face. For use with plastic cover.

\$43.⁷⁵/each



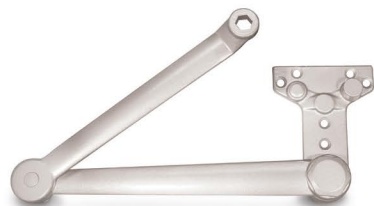
DPPA41

Drop Plate-Parallel Arm Mount

Available Finish: AL/DU

Required for parallel arm when top rail is less than 5 ¹/₂", measured from the top. Plate requires 2" minimum top rail.

\$43.⁷⁵/each

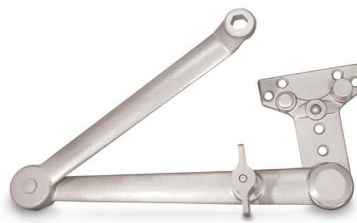


DCCA-41

Cush Stop Arm

Available Finish: AL/DU

\$75.⁰⁰/each



DCHA-41

Cush Stop Hold Open Arm

Available Finish: AL/DU

\$75.⁰⁰/each

DCSB175

Sex Bolt

Available Finish: AL/DU

\$5.⁰⁰/each (Maximum extension 2 ¹/₄")



DOOR CLOSERS

DC50 Door Closer with Full Plastic Cover

Similar to LCN 4041

Standard Features

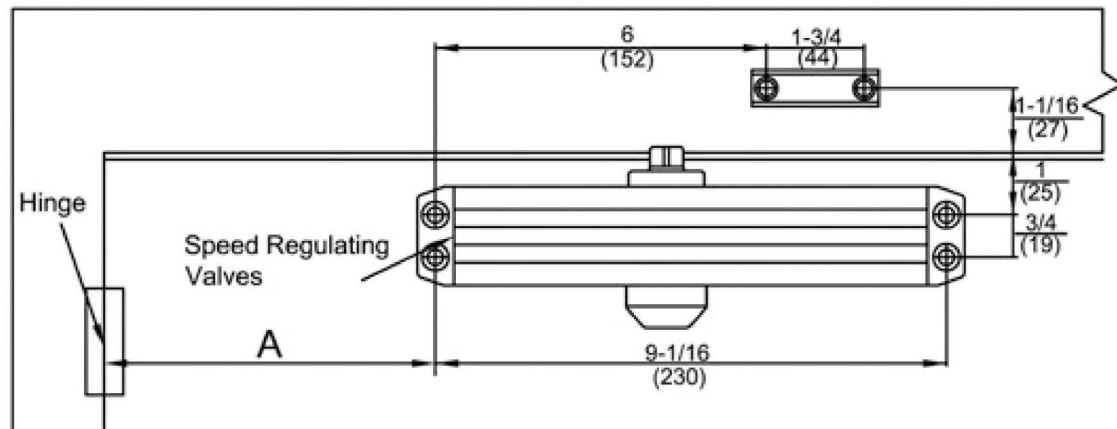
- Factory tested to meet or exceed ANSI A 156.4 Grade 1
- ADA Compliant
- Cast aluminum body; forged steel arm
- Tri-packed for regular arm, top jamb, and parallel arm application included
- Adjustable power, from size 1-4, with adjustable back check function
- Full plastic cover included
- Standard packing including sex nuts and bolts



\$110.⁰⁰/each (4 to a case)



Technical Dimensions



Dimension Model No.:	Dimension "A"		Opening Angle
	Inch	mm	
DC1050	6	152	120°
	3-1/2	89	180°

Description

- A. Length of Closer Body
- B. Horizontal Mounting Holes
- C. Vertical Mounting Holes
- D. Closer Body Height
- E. Projection From Door
- F. Arm Shoe Spacing

Dimensions

- 9 3/4"
- 9 1/16" CTC
- 3/4" CTC
- 1 13/16"
- 2 3/4"
- 1 3/4" CTC



Accessories

DOOR CLOSERS

Independent Security Partners



DPPA50
3 1/2" Tall Drop Plate
Available Finish: AL/DU
\$37.⁵⁰/each



DPTJ50
2 9/16" Tall Narrow Drop Plate
Available Finish: AL/DU
\$37.⁵⁰/each



DCCA50
Cush Stop Arm
Available Finish: AL/DU
\$75.⁰⁰/each



DCHA50
Cush Stop Hold Open Arm
Available Finish: AL/DU
\$75.⁰⁰/each



LOCKSETS

Grade Two Locksets

- 6 pin "C" Keyway
- Ansi Strike 4 7/8" x 1 1/4"
- 2 3/4" Backset
- 1 3/8" - 2" Doors
- UL Latch 1/2" Throw
- Removable Thru Bolts
- 2 3/8" Latch Sold Separately



Entry

* Indicates rigid lever sets.

Part Number	Finish	Function	Cylinder/Core	List Price
2000-Clare-11-26D	26D	11	Standard	\$109.00
2000-Clare-11-10B	10B	11	Standard	\$109.00
2000-Clare-11-3	3	11	Standard	\$109.00
2000-Clare-11-IC-26D	26D	11	SFIC	\$109.00
2000-Clare-11-IC-3	3	11	SFIC	\$109.00
2500-Clare-11-26D*	26D	11	Standard	\$109.00

Storeroom

Part Number	Finish	Function	Cylinder/Core	List Price
2000-Clare-12-26D	26D	12	Standard	\$109.00
2000-Clare-12-10B	10B	12	Standard	\$109.00
2000-Clare-12-3	3	12	Standard	\$109.00
2000-Clare-12-IC-26D	26D	12	SFIC	\$109.00
2000-Clare-12-IC-3	3	12	SFIC	\$109.00
2500-Clare-12-26D*	26D	12	Standard	\$109.00

Classroom

Part Number	Finish	Function	Cylinder/Core	List Price
2000-Clare-17-26D	26D	17	Standard	\$119.00
2000-Clare-17-10B	10B	17	Standard	\$119.00
2000-Clare-17-3	3	17	Standard	\$119.00
2000-Clare-17-IC-26D	26D	17	SFIC	\$119.00
2000-Clare-17-IC-3	3	17	SFIC	\$119.00
2500-Clare-17-26D*	26D	17	Standard	\$119.00

Privacy

Part Number	Finish	Function	List Price
2000-Clare-02-26D	26D	2	\$99.00
2000-Clare-02-10B	10B	2	\$99.00
2000-Clare-02-3	3	2	\$99.00
2500-Clare-02-26D*	26D	2	\$99.00

Passage

Part Number	Finish	Function	List Price
2000-Clare-01-26D	26D	1	\$99.00
2000-Clare-01-10B	10B	1	\$99.00
2000-Clare-01-3	3	1	\$99.00

Custom keying available upon request. Call for a price quote.





Grade One Locksets

- 6 pin "C" Keyway
- Ansi Strike 4 7/8" x 1 1/4"
- 2 3/4" Backset
- 1 3/8" - 2" Doors
- UL Latch 1/2" Throw
- Fixed Thrubolts
- Non-Handed Clutch Lever
- 2 3/8" Latch Sold Separately

LOCKSETS

Independent Security Partners

Entry

Part Number	Finish	Function	Cylinder/Core	List Price
1000-Clare-11-26D	26D	11	Standard	\$149.00
1000-Clare-11-10B	10B	11	Standard	\$149.00
1000-Clare-11-3	3	11	Standard	\$149.00
1000-Clare-11-IC-26D	26D	11	SFIC	\$149.00
1000-Clare-11-IC-3	3	11	SFIC	\$149.00

Storeroom

Part Number	Finish	Function	Cylinder/Core	List Price
1000-Clare-12-26D	26D	12	Standard	\$149.00
1000-Clare-12-10B	10B	12	Standard	\$149.00
1000-Clare-12-3	3	12	Standard	\$149.00
1000-Clare-12-IC-26D	26D	12	SFIC	\$149.00
1000-Clare-12-IC-3	3	12	SFIC	\$149.00

Classroom

Part Number	Finish	Function	Cylinder/Core	List Price
1000-Clare-17-26D	26D	17	Standard	\$159.00
1000-Clare-17-10B	10B	17	Standard	\$159.00
1000-Clare-17-3	3	17	Standard	\$159.00
1000-Clare-17-IC-26D	26D	17	SFIC	\$159.00
1000-Clare-17-IC-3	3	17	SFIC	\$159.00

Privacy

Part Number	Finish	Function	List Price
1000-Clare-02-26D	26D	2	\$129.00
1000-Clare-02-10B	10B	2	\$129.00
1000-Clare-02-3	3	2	\$129.00

Passage

Part Number	Finish	Function	List Price
1000-Clare-01-26D	26D	1	\$129.00
1000-Clare-01-10B	10B	1	\$129.00
1000-Clare-01-3	3	1	\$129.00

2 3/8" Latches

GR1-238-DL-26D	Grade 1, 2 3/8" Dead Latch	26D	\$18.75
GR1-238-SL-26D	Grade 1, 2 3/8" Spring Latch	26D	\$18.75
GR2-238-DL-26D	Grade 2, 2 3/8" Dead Latch	26D	\$18.75
GR2-238-SL-26D	Grade 2, 2 3/8" Spring Latch	26D	\$18.75

Toll-free 1-888-321-7550



LOCK SETS

Commercial Deadbolts

(Schlage C Keyway)

- 6 pin "C" Keyway
- Ansi Strike 1 1/8" x 2 3/4"
- 2 3/4" Backset
- 1 3/8" - 2" Doors
- UL Latch 1" Throw
- 2 3/8" Latch Sold Separately



Grade One

	Part Number	Finish	List Price
Single Deadbolt	101-234-26D	26D	\$79.00
Single Deadbolt	101-234-3	3	\$79.00
Double Deadbolt	102-234-26D	26D	\$99.00
Double Deadbolt	102-234-3	3	\$99.00
Single IC Deadbolt	101-IC-234-26D	26D	\$89.00

Grade Two

	Part Number	Finish	List Price
Single Deadbolt	201-234-3	3	\$49.00
Single Deadbolt	201-234-26D	26D	\$49.00
Double Deadbolt	202-234-3	3	\$69.00
Double Deadbolt	202-234-32D	32D	\$69.00
Single IC Deadbolt	201-IC-234-26D	26D	\$79.00

Grab Bars (1 1/2" Diameter Stainless Steel)

Part Number	Description	Finish	List Price
FGB42-CP-32D	Grab Bar S/S Center PT CONC SCR 42"	32D	\$95.00 ea
FGB42-32D	Grab Bar S/S CONC SCR 42"	32D	\$75.00 ea
FGB36-32D	Grab Bar S/S CONC SCR 36"	32D	\$69.00 ea
FGB30-32D	Grab Bar S/S CONC SCR 30"	32D	\$59.00 ea
FGB24-32D	Grab Bar S/S CONC SCR 24"	32D	\$56.00 ea
FGB18-32D	Grab Bar S/S CONC SCR 18"	32D	\$49.00 ea



Butt Hinges

- 4 1/2" x 4 1/2"
- Square Corners
- .134" Thick
- Packed with Machine and Wood Screws
- 3 Hinges per Set
- 16 Sets per Case



HINGES

Steel

Part Number	Description	List Price
S45USP	Plain Bearing	\$16.00 per set
S45BBUSP	2 Ball Bearing	\$18.00 per set
S45BBUSPNRP	2 Ball Bearing / NRP	\$20.00 per set
S4526D	Plain Bearing	\$18.00 per set
S45BB26D	2 Ball Bearing	\$21.00 per set
S45BB26DNRP	2 Ball Bearing / NRP	\$22.00 per set

Stainless Steel

Part Number	Description	List Price
SS45BB32DNRP	2 Ball Bearing / NRP	\$68.00 per set

Spring Hinges

Part Number	Description	List Price
SH4526D	Plain Bearing	\$18.00 each



Independent Security Partners

Aluminum Continuous Gear Hinges

SD= Standard Duty

C= Clear

HD= Heavy Duty

D= Dark Bronze



Part Number	Length	Description	List Price
SL-11-SD-C-83	83"	Full Concealed - Standard Duty - Clear	\$158.00
SL-11-SD-D-83	83"	Full Concealed - Standard Duty - Dark Bronze	\$195.00
SL-11-HD-C-83	83"	Full Concealed - Heavy Duty - Clear	\$183.00
SL-11-HD-D-83	83"	Full Concealed - Heavy Duty - Dark Bronze	\$240.00
SL-21-SD-C-83	83"	Full Surface Swing Clear- Standard Duty - Clear	\$227.00
SL-21-SD-D-83	83"	Full Surface Swing Clear- Standard Duty - Dark Bronze	\$288.00
SL-57-SD-C-83	83"	Full Surface - Standard Duty - Clear	\$222.00
SL-57-SD-D-83	83"	Full Surface - Standard Duty - Dark Bronze	\$288.00
SL-57-HD-C-83	83"	Full Surface - Heavy Duty - Clear	\$274.00
SL-57-HD-D-83	83"	Full Surface - Heavy Duty - Dark Bronze	\$320.00

Other sizes available, call for quote.

CYLINDERS

Knob / Lever / DB Cylinder - K001

- Solid Brass
- Precision Depths & Spacing
- 2 Keys
- Drilled 6
- Pinned 5 (some pinned 6)
- Packed with 5 tailpieces
- Finish: US4, 26D



\$25.⁰⁰/each

Rim Cylinder - R118

- Solid Brass
- Precision Depths & Spacing
- 2 Keys
- Drilled 6
- Pinned 5 (some pinned 6)
- 1 1/8"
- Finish: US3, US10B, US26D



\$25.⁰⁰/each

Mortise Cylinder - M100

- Solid Brass
- Precision Depths & Spacing
- 2 Keys
- Drilled 5
- Pinned 5
- 1"
- Cam: Standard, Adams Rite, Cloverleaf, Schlage L, Sargent/Yale, Segal
- Finish: US3, US10B, US26D



Mortise Cylinder - M118

- 1 1/8"

Mortise Cylinder - M114

- 1 1/4"

\$23.⁰⁰/each

Available Keyways

- | | | |
|--------------------|--------------------|-----------------|
| • AW (Arrow) | • SA (Sargent LA) | • WR (Weiser E) |
| • CB (Corbin 60) | • RA (Sargent RA) | • YA (Yale 8) |
| • CL4 (Corbin L4) | • SC (Schlage C) | • YGA (Yale GA) |
| • KW (Kwikset) | • SX (Schlage C-K) | |
| • RD1 (Russwin D1) | • SCE (Schlage E) | |



Mortise Thumb Turn

- Solid Brass
- Finish: US3, US10B, US26D



CYLINDERS

Part Number	Description	List Price
M100T	1" Available in Adams Rite Cam	\$15.00 ea
M118T	1 1/8" Available in Adams Rite & Standard Cam	\$16.00 ea
M114T	1 1/4" Available in Standard Cam	\$17.00 ea

Mortise Cylinder Dummy



- M100D 1"
- M118D 1/18"
- M114D 1 1/4"
- Solid Brass
- Finish: US3, US10B, US26D

\$15.00/each

Interchangeable Core - IC7 (SFIC)

- Solid Brass
- 7 Pin
- Uncombined
- Keyways: Best A, B, C, D, E, F, G, H, J, K, L, M
- Finish: US4, US26D

\$20.00/each



SFIC Housings

- Solid Brass
- Finish: US3, US10B, US26D



Part Number	Description	List Price
ICH138	1 3/8" Mortise Housing	\$32.00 ea
ICH114	1 1/4" Mortise Tapered Housing	\$34.00 ea
ICH114R	1 1/4" Rim Housing	\$35.00 ea

SFIC Key Blank - ICKB

- Solid Brass
- Precision Depths & Spacing
- Keyways: Best A, B, C, D, E, F, G, H, J, K, L, M
- Finish: BR (Brass), NP (Nickel Plated), NS (Nickel Silver)

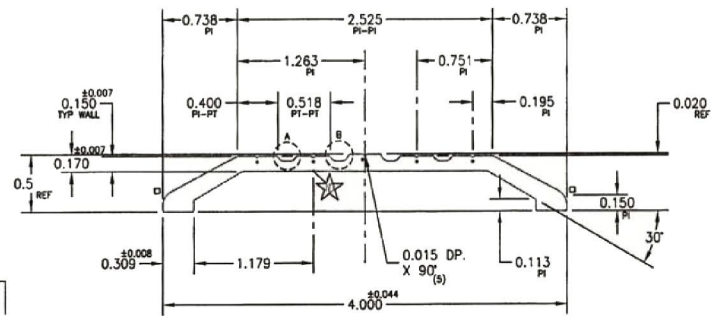
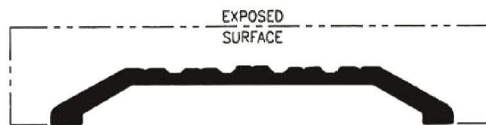
\$2.50/each

THRESHOLDS

Heavy Duty Thresholds at Standard Threshold Pricing

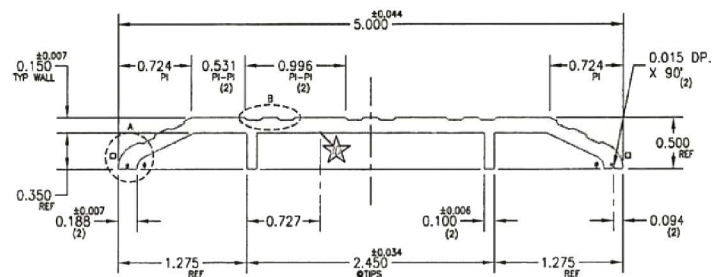
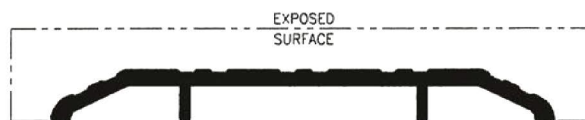
- .15" Thick

450HD-AI.



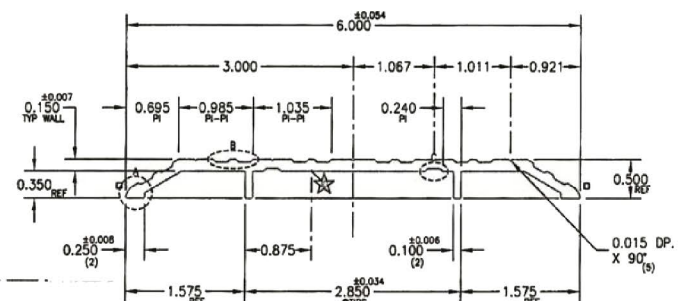
6063-T6 Aluminum

550HD-AI.



6063-T6 Aluminum

650HD-AL



6063-T6 Aluminum

Mill Finish Thresholds are supplied with Zinc Plated Screws #10 x 1 1/2 & Plastic Anchors. Tapcons are optional.

List Price

	450HD-AL	550HD-AL	650HD-AL
36"	\$28.00List	\$39.00 List	\$51.00 List
48"	\$37.00 List	\$50.00 List	\$72.00 List
72"	\$54.00 List	\$75.00 List	\$96.00 List



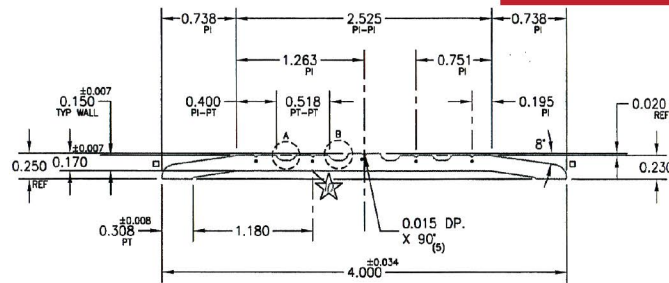
*Custom lengths available. Call for details.



THRESHOLDS

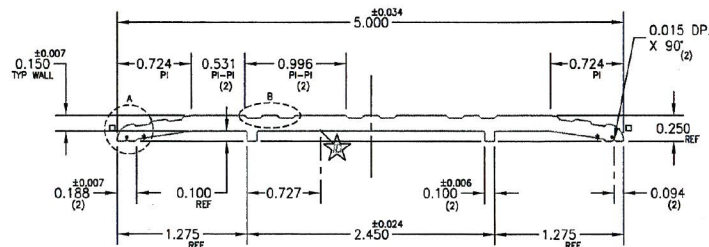
Independent Security Partners

425HD-AL



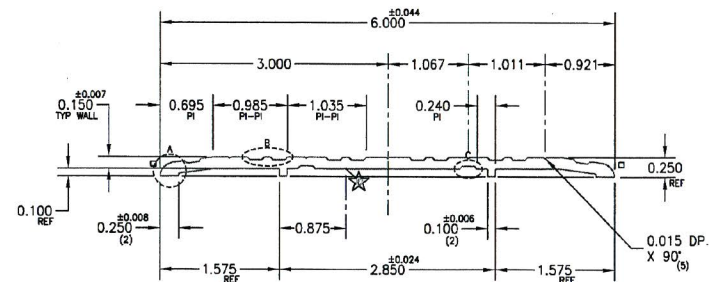
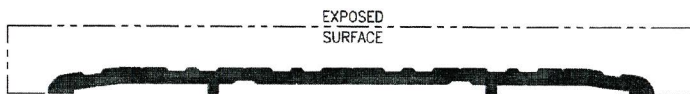
6063-T6 Aluminum

525HD-AL



6063-T6 Aluminum

625HD-AL



6063-T6 Aluminum

Mill Finish Thresholds are supplied with Zinc Plated Screws #10 x 1 1/2 & Plastic Anchors. Tapcons are optional.

List Price

	425HD-AL	525HD-AL	625HD-AL
36"	\$27.00 List	\$37.00 List	\$51.00 List
48"	\$37.00 List	\$49.00 List	\$72.00 List
72"	\$46.00 List	\$62.00 List	\$92.00 List



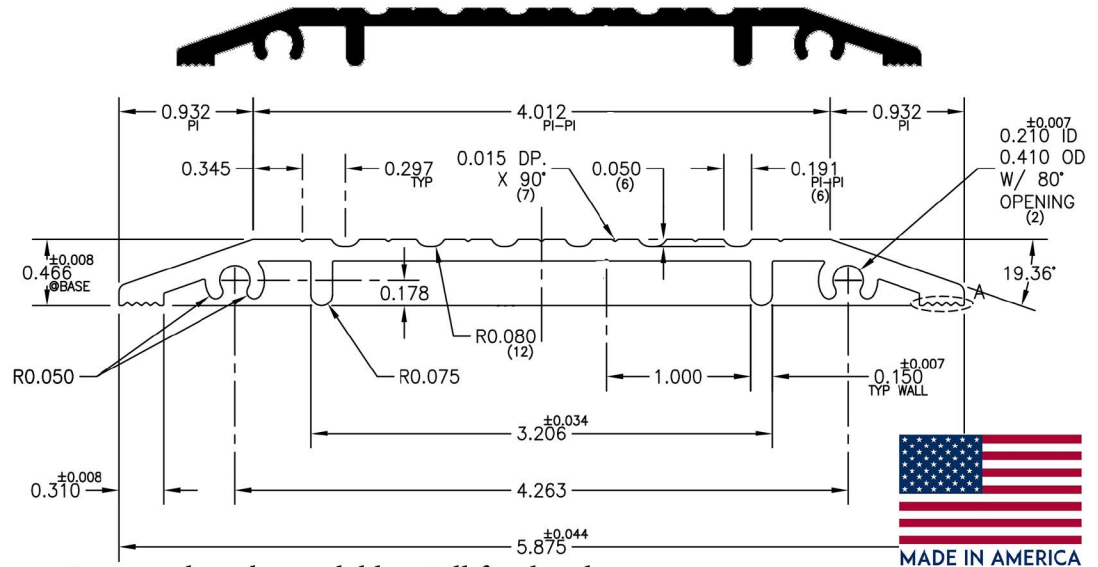
*Custom lengths available. Call for details.

THRESHOLDS

587 Thresholds

Heavy duty threshold (.150" thick) in a mill finish. Comes supplied with #10 x 1 1/2 screws and anchors, plus additional screws for pre-install thresholds to a hollow metal frame, replacing the need for spreader bars.

587HD-AL-36	\$54.00 List
587HD-AL-48	\$76.00 List
587HD-AL-72	\$98.00 List

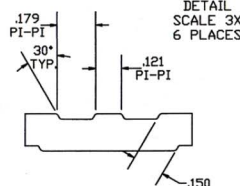
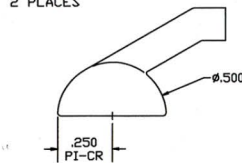


850HD-AL

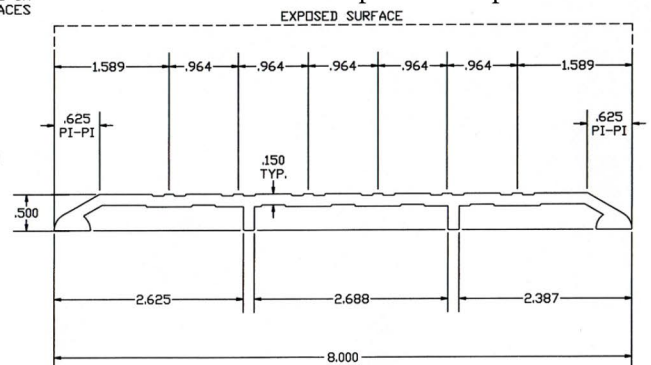


Thresholds are .150" thick and weigh 1.726 lbs. per foot. Mill finish thresholds are supplied with zinc plated screws #10 x 1 1/2 and anchors. Tapcons are optional.

DETAIL
SCALE 3X
2 PLACES



DETAIL
SCALE 3X
6 PLACES



850HD-AL-36	\$57.00 List
850HD-AL-48	\$77.00 List
850HD-AL-72	\$112.00 List

*Custom lengths available. Call for details.

Custom Threshold Notching

Now available on all thresholds.

\$10.00 List

Volume Runs subject to additional discounts on notching services.
Call and speak to a sales rep for more details and information.

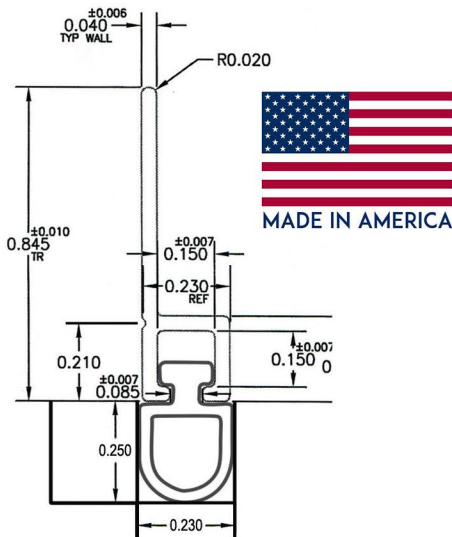
All Prices in Catalog Subject to Change Without Notice



Firelands Weatherstripping Kits

Independent Security Partners

Product is punched on 11" center with slotted holes for adjustment. Made with EPDM, a synthetic rubber and an elastomer that has the ability to perform in a wide range of applications and performs better than Vinyl PVC. Supplied with #6 7/16 Tek screws.



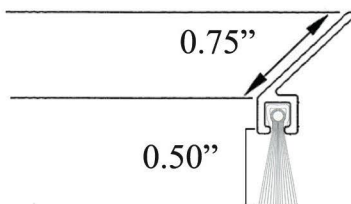
WS-3070-AL	\$27.50 List
WS-4070-AL	\$30.00 List
WS-6070-AL	\$33.00 List
WS-3070-DU	\$50.00 List
WS-4070-DU	\$53.00 List
WS-6070-DU	\$62.00 List

Resilience: Very Good
Resistance to Fatigue: Very Good
Resistance to Weathering: Excellent
Service Temperature Range -75* to 350* F
Chemical Resistance: Excellent
Solvent Resistance: Excellent
*Custom lengths available. Call for details.

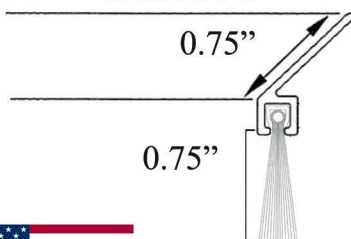
45 Degree Weatherstripping Kits

High Quality filament fused to a continuous base to provide a consistent brush barrier. Slotted holes for adjustment. Ideal for low closing force applications. Supplied with #6 7/16 Tek screws.

WS4550



WS4575



WS4550-3070-AL	\$60.00 List
WS4550-4070-AL	\$63.00 List
WS4550-6070-AL	\$70.00 List
WS4550-3070-DU	\$72.00 List
WS4550-4070-DU	\$76.00 List
WS4550-6070-DU	\$82.00 List

WS4575-3070-AL	\$62.00 List
WS4575-4070-AL	\$65.00 List
WS4575-6070-AL	\$70.00 List
WS4575-3070-DU	\$75.00 List
WS4575-4070-DU	\$78.00 List
WS4575-6070-DU	\$85.00 List

*Custom lengths available. Call for details.



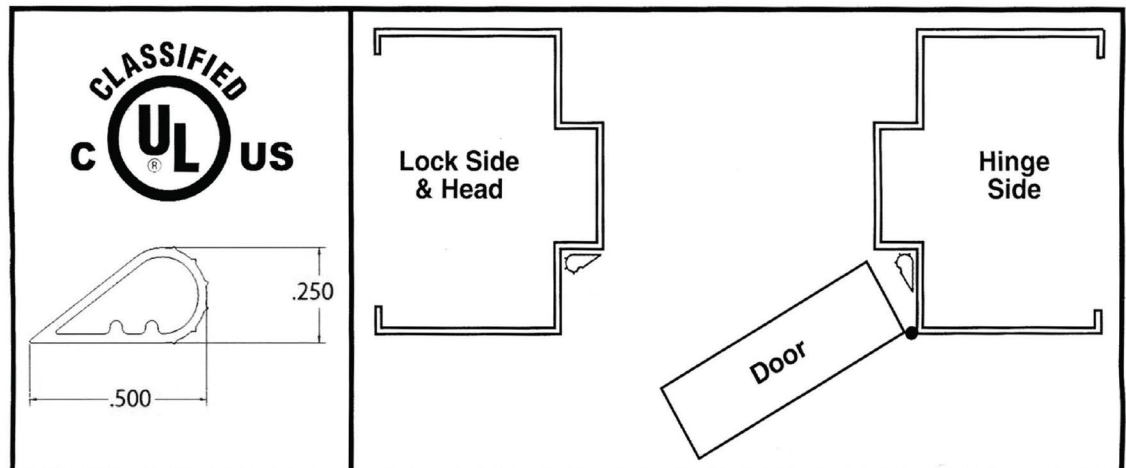
WEATHERSTRIPPING

Adhesive Weatherstripping Kits



Adhesive Weatherstripping	
AWS-17	\$19.00 List
AWS-19	\$21.00 List
AWS-21	\$23.00 List

Self adhesive door gasket with a silicone tear drop design for a quick and easy installation. Kit includes an alcohol wipe for frame prep.
*Custom lengths available. Call for details.

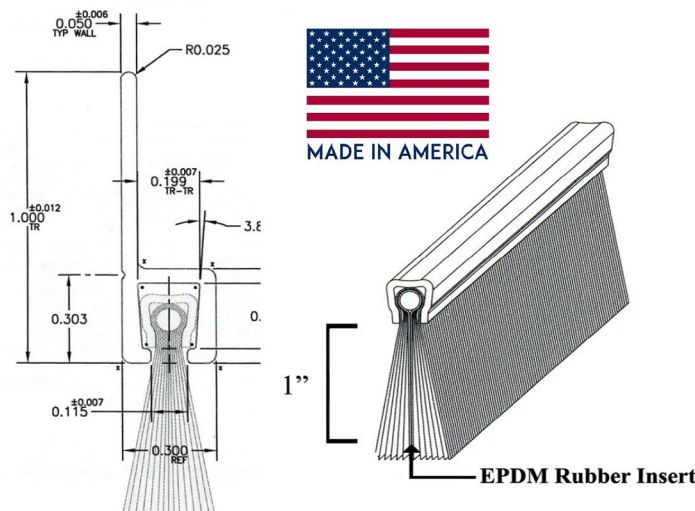


Positive Pressure Tested Gasketing Materials for Fire Doors.
Meets UL10B, UL10C.

Door Sweeps

ISP's Brush Door Sweep is the convenient, money saving alternative to traditional metal-back brush seals. Made of rugged yet lightweight and pliable materials, resistant to corrosion and chemicals, with a homogeneous bond between the backing material and the filament. Our upgraded sweep option, the DSV, ensures a secure seal and a barrier against smoke, air infiltration, and extreme weather. A single durable EPDM rubber insert provides an excellent seal.

*Custom lengths available. Call for details.



Aluminum Finish	
DSV-AL-36	\$14.75 List
DSV-AL-48	\$20.00 List
DSV-AL-72	\$31.00 List
DS-AL-36	\$12.00 List
DS-AL-48	\$16.00 List
DS-AL-72	\$24.00 List

Dark Bronze Finish	
DSV-DU-36	\$21.00 List
DSV-DU-48	\$26.00 List
DSV-DU-72	\$39.00 List
DS-DU-36	\$18.00 List
DS-DU-48	\$24.00 List
DS-DU-72	\$35.00 List



Hooded Door Sweeps

ISP's Hooded Brush Door Sweep is the convenient, money-saving alternative to traditional metal-back brush seals. Made of rugged, yet lightweight and pliable materials, resistant to corrosion and chemicals, with a homogenous bond between the backing and the filament. ISP's new large weatherblock weatherseal ensure a secure seal and barrier against smoke, air infiltration, and extreme weather. A single durable EPDM rubber insert provides an excellent seal. Provided with #6 7/16 Tek screws.

DSH= Regular Hooded Door Sweep

DSVH= Hooded Door Sweep with EPDM insert

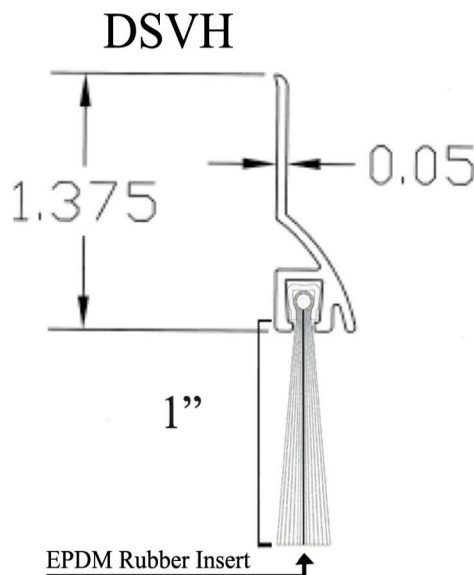
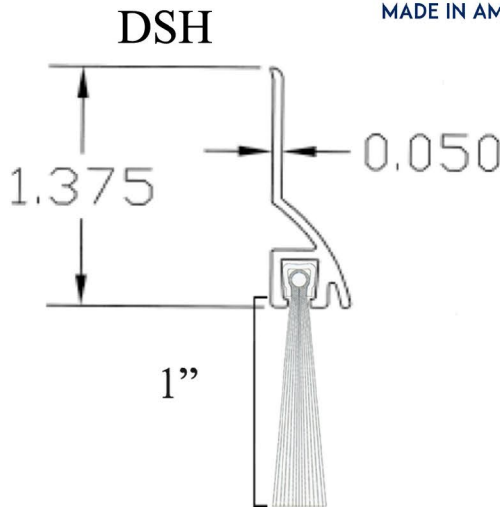
*Custom lengths available. Call for details.



Aluminum Finish	
DSVH-AL-36	\$18.00 List
DSVH-AL-48	\$22.00 List
DSVH-AL-72	\$33.00 List
DSH-AL-36	\$15.00 List
DSH-AL-48	\$19.00 List
DSH-AL-72	\$28.00 List

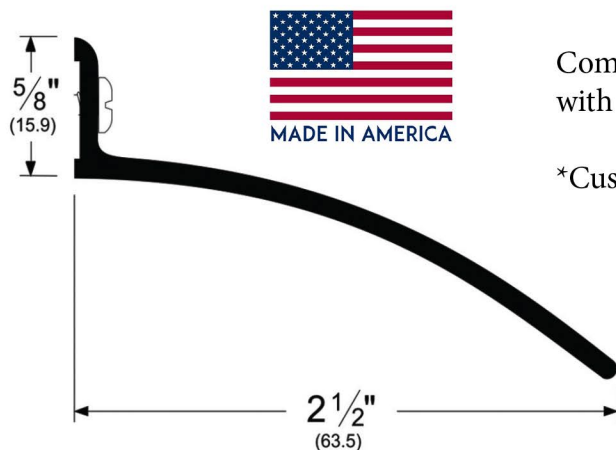
Clear Anodized Finish	
DSVH-CL-36	\$20.00 List
DSVH-CL-48	\$25.00 List
DSVH-CL-72	\$36.00 List
DSH-CL-36	\$19.00 List
DSH-CL-48	\$23.00 List
DSH-CL-72	\$36.00 List

Dark Bronze Finish	
DSVH-DU-36	\$20.00 List
DSVH-DU-48	\$24.00 List
DSVH-DU-72	\$38.00 List
DSH-DU-36	\$18.50 List
DSH-DU-48	\$22.50 List
DSH-DU-72	\$35.00 List



DRIP EDGES

Drip Edges

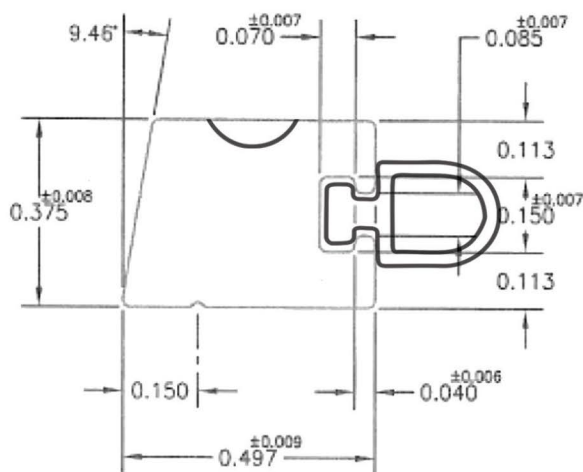


Comes in a mill finish, drilled and countersunk, with #6⁷/₁₆" Teck screws included.

*Custom lengths available. Call for details.

DE-AL-36	\$16.00 List
DE-AL-48	\$21.00 List
DE-AL-72	\$31.00 List

Threshold Stops



Mill finish, drilled and countersunk, with #6³/₄" Teck screws included.

*Custom lengths available. Call for details.

TS-AL-36	\$13.00 List
TS-AL-48	\$17.00 List
TS-AL-72	\$25.00 List



Tape Roll

Doublesided adhesive tape for weatherstripping and door sweeps. 210 feet of tape per roll.

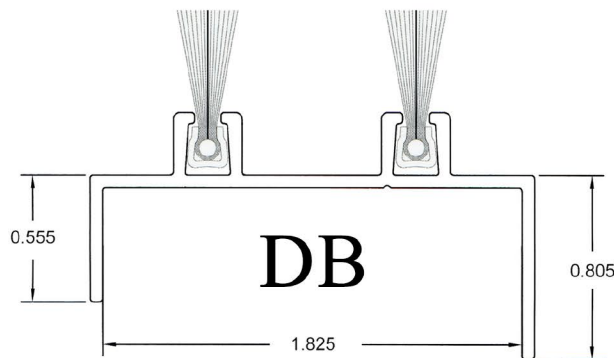
TAPE-1	\$50.00 List
--------	--------------



Aluminum Door Bottom

DOOR SWEEPS

Our aluminum door bottom includes two rows of 1/2" brush with an EPDM insert for an extra tight seal for when you absolutely need to block water, dirt, rodents, and light. Comes in a mill finish of 6063 T6 Alloy, with Tek screws for installation. Ships within one week.

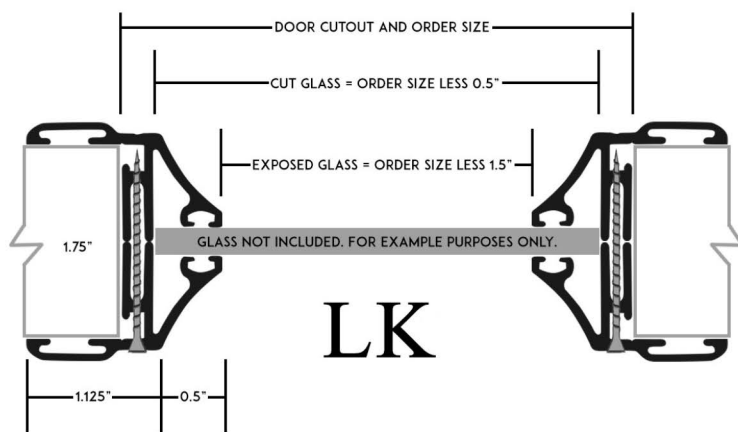


DB-36-AL = \$30.00 List
DB-48-AL = \$40.00 List



Aluminum Lite Kits

Our Aluminum Lite Kits come with 0.05 extruded aluminum, mitered and welded corners, counter-sunk mounting screw-holes, welded reinforcing clips at the corners. Dimensions are for exposed glass. Custom sizes available upon request.



LK-10x10-AL = \$70.00 List
LK-05x20-AL = \$80.00 List
LK-22x28-AL = \$145.00 List

Independent Security Partners

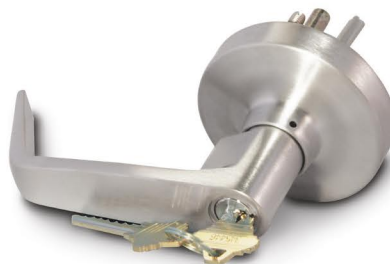
Vinyl Door Caps

An easy solution in protector door core on exterior doors. Our Vinyl Door Caps prevent rain from falling into the top dor channel. Will fit a 3/4 door with an inverted channel.

VDC-36 = \$36.00 List
VDC-48 = \$48.00 List



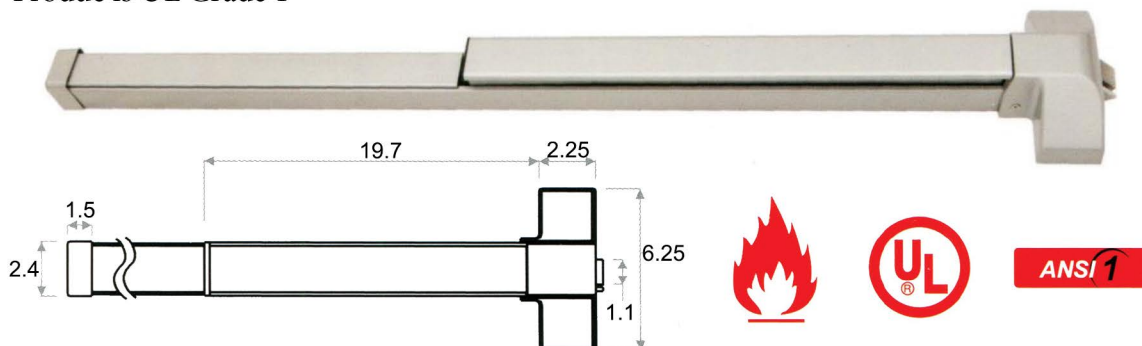
EXIT DEVICES



Part Number	Description	Finish	List Price
PDVR36-DURO	Panic Device 36" Vertical Rod	Duro	\$340.00 ea
PDVR36-AL	Panic Device 36" Vertical Rod	Aluminum	\$340.00 ea
PDVR36UL-AL	Panic Device 36" Vertical Rod	Aluminum	\$499.00 ea
PDVR36UL-DURO	Panic Device 36" Vertical Rod	Duro	\$499.00 ea
PDR36-DURO	Panic Device Rim Standard	Duro	\$209.00 ea
PDR36-AL	Panic Device Rim Standard	Aluminum	\$209.00 ea
2000-CLARE-TR-10B	Clare Classroom Trim	10B	\$99.00 ea
2000-CLARE-TR-26D	Clare Classroom Trim	26D	\$99.00 ea
PDR 36UL - 32D*	Exit Device Rim 36"/UL Fire Rated-3 hrs	32D	\$380.00 ea
PDRVR 36UL - 32D*	Exit Device Rim 36" with Vertical Rod/UL Fire Rate-3 hrs	32D	\$530.00 ea
PD-600-36-AL*	Painted Aluminum Panic Device	Aluminum	\$179.00 ea
PD-600-36-DU*	Painted Dark Bronze Panic Device	Duro	\$179.00 ea
PD-600-36-32D*	Stainless Steel Panic Device	32D	\$199.00 ea
PD-F60-36-DU*	UL 3hr Fire Rated Dark Bronze Panic Device	Duro	\$219.00 ea
PD-F60-36-32D*	UL 3hr Fire Rated Stainless Steel Panic Device	32D	\$249.00 ea
DDS*	Double Door Strike	N/A	\$25.00 ea



*Product is UL Grade 1



Panic Device Exterior Options

TRIM KITS

Independent Security Partners

The **TL-12-AL** is a Classroom Handleset for all wide and medium stile doors. For use on a door's exterior with a Panic Device. Covers the standard 2.165" bore hole prep. Packaged with rim lock cylinder (Schlage C Keyway), mounting hardware, instructions, and 2 keys. Comes in Stainless Steel, Handle plate height: 13.75, Handle plate width: 3, Pull Handle, 5 1/2" CTC, Pull projection: 1.85". **Top Left**

The **TR-HD-12-32D** is a wide Escutcheon Plate Classroom Lever that is suitable for all wide and medium stile doors. For use on a door's exterior with a Panic Device. Heavy Duty Commercial set covers the standard 2.165" bore hole prep. Packaged with mounting hardware, instructions, and 3 keys. Stainless Steel, Handle plate height: 9", Handle plate width: 3", Lever projection: 2, Lever Length: 5", ADA Compliant. **Bottom Right**

The **PP312-32D** is a pull handle trim to be used with a Panic Device. For use on a door's exterior with a Panic Device. Comes in Stainless Steel, Handle plate height: 11.8", Handle plate width: 3", Pull Handle, 6 1/2" CTC, Pull projection: 2.5"

Bottom Left

Part Number	Price
TL-12-AL	\$129.00 List
TR-HD-12-32D	\$179.00 List
PP312-32D	\$49.00 List



Trim Kits

Heavy duty commercial set covers a standard 2.165" bore hole door prep. Packaged with mounting hardware, instructions, and 3 keys (keys in entry function only).

Finish: 26D or 10B, Rosette Diameter: 3.35", Lever Length: 5.2", Lever Projection: 2.67", ADA Compliant, Non Handed

Part Number	Function	Price
2012-TR	Entry	\$93.00 List
2001-TR	Passage	\$89.00 List



NOTES

